

BINDOMATIC 1000

THERMAL BINDING



PERSONAL USE DOCUMENT BINDER.

The Bindomatic® 1000 is a small and manually operated binder designed mainly for personal use, yet producing the same professionally bound documents as the more advanced binders, and it will fit on your desk!

Bind documents up to 120 sheets without hassle. Now you can bind those quotes, contracts, manuals, brochures etc and not even leave your desk. Whether you need binding capacity in the home office or as a complement to one of our larger document binders, the Bindomatic 1000 is for you. It is compact and easy to use, and it is always within arm's reach.

BINDOMATIC® 1000 DETAILS

DOCUMENT SIZE

All formats (A3, A4, A5, etc.) with a maximum spine length of 297 mm (A4)

SYSTEM CAPACITY

Up to 120 sheets of 80 gsm paper.
Load up to 5 documents per binding cycle (~90 sec) depending on the width of the spine

DOCUMENT SPINE WIDTH

From 1.5 to 12 mm

MACHINE DIMENSIONS

L 376 x W 104 x H 158 mm

MACHINE WEIGHT

0,9 kg

POWER SUPPLY

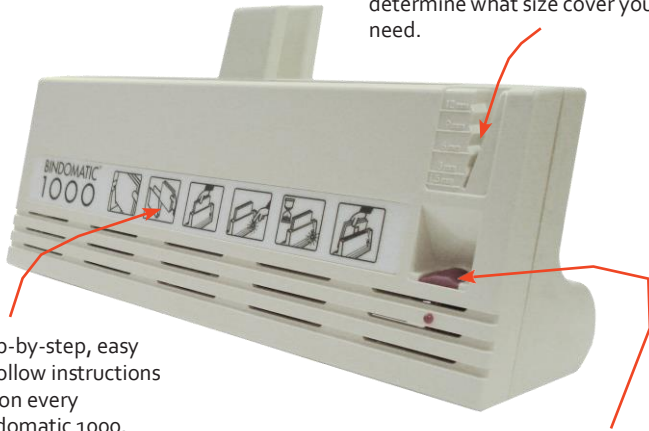
230V, 50/60Hz, 300W (maximum)

360
VIEW

HOW IT WORKS

A. FRONT AND LEFT SIDE

Use the cover size selector on the front of the machine to determine what size cover you need.



Step-by-step, easy to follow instructions are on every Bindomatic 1000.

Pressing the red button starts the binding process. The document is done when the red indicator light goes off.

B. BACK



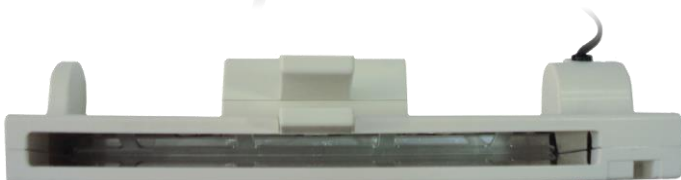
C. BACK AND RIGHT SIDE

Place your document and cover here. The binding plate will reach an optimal temperature to melt the glue strip in the cover, securely binding your pages.



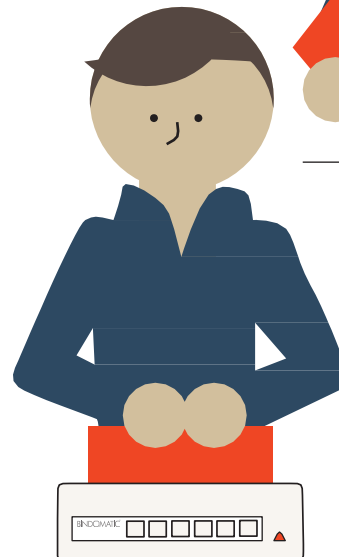
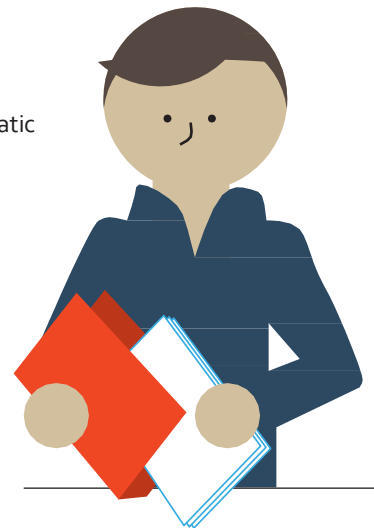
Every Bindomatic 1000 has an attached cooling rack on the back.

D. OVERHEAD



1. Determine spine size using guide on the front of the machine.

2. Place document pages in a Bindomatic cover, with the correct spine size, and align.



3. Bind one or several documents at a time by placing the cover — spine side down — on the heating plate.

4. Wait for the machine to red indicator light to turn off, indicating that the thermal binding process is complete. Remove the bound document(s) from the heating plate. Allow the finished document(s) to rest — spine side down — in the cooling rack for two minutes before opening.